

# The National Oceanic and Atmospheric Administration





# NOAA's Vision, Mission, Values

## NOAA's VISION

*An informed society that uses a comprehensive understanding of the role of the oceans, coasts, and atmosphere in the global ecosystem to make the best social and economic decisions.*

## NOAA's MISSION

*To understand and predict changes in Earth's environment and conserve and manage coastal and marine resources to meet our Nation's economic, social, and environmental needs.*

## NOAA's CORE VALUES

*People, Integrity, Excellence, Teamwork, and Ingenuity  
Science, Service, and Stewardship*



# NOAA's Line Offices

National Marine Fisheries Service

National Ocean Service

Office of Oceanic and Atmospheric  
Research

National Weather Service

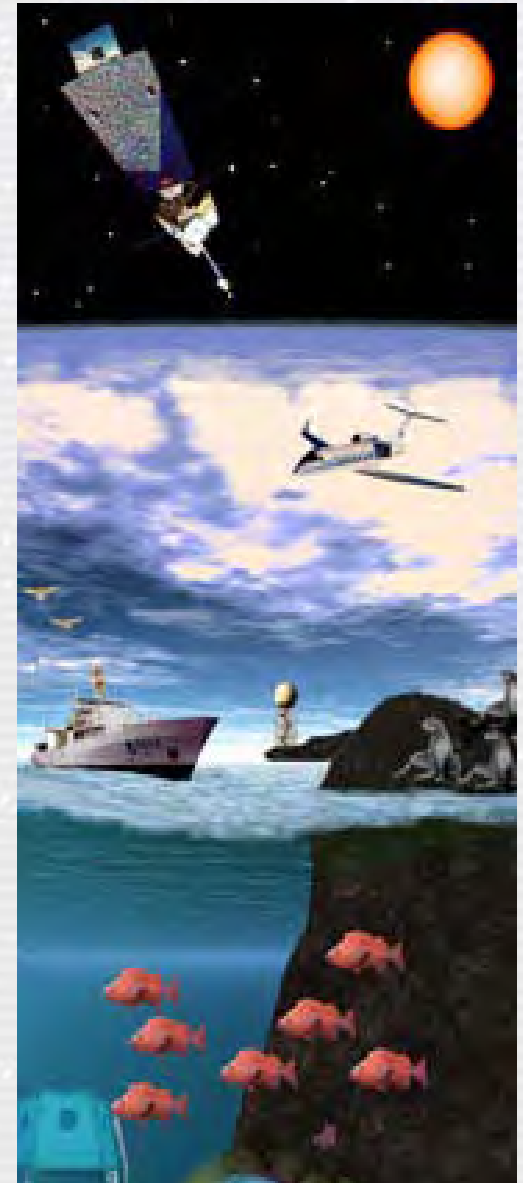
National Environmental Satellite,  
Data and Information Service

Program Planning And Integration

NOAA Marine And Aviation Operations

12K employee's, 6K contractors

Budget of \$4.7 Billion

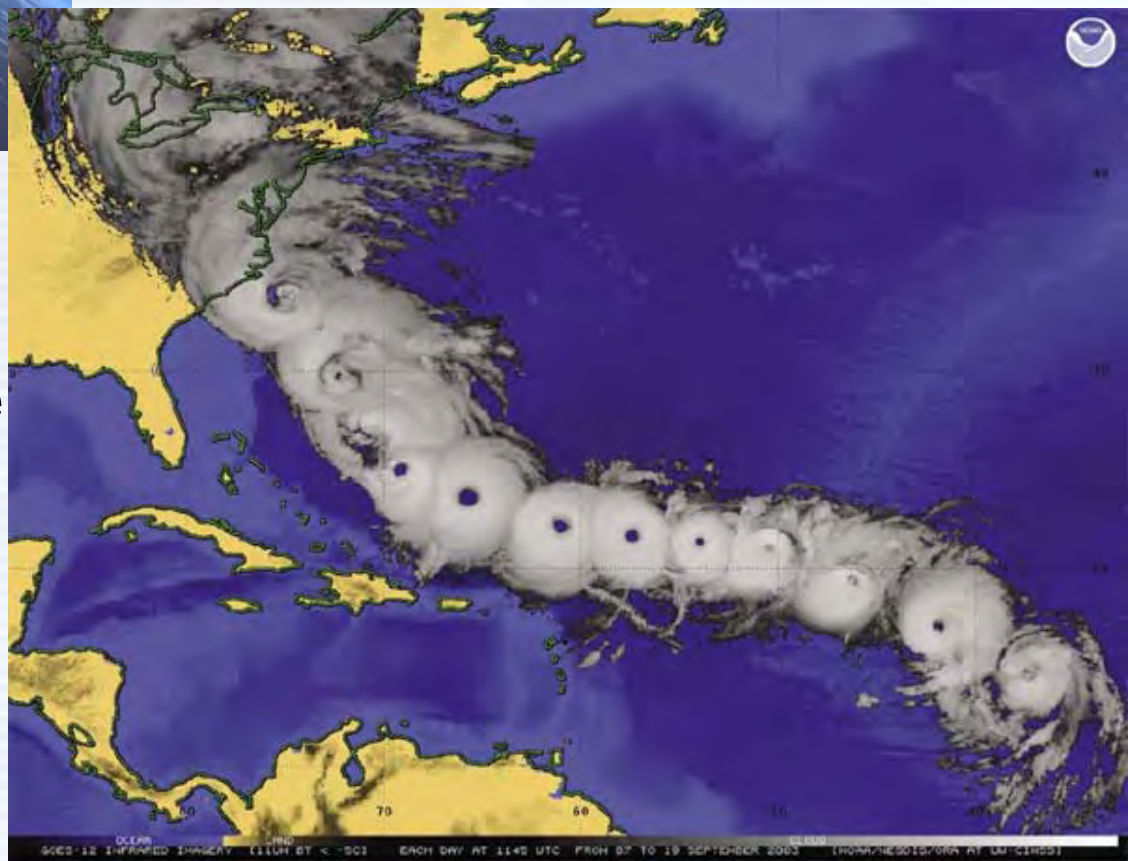




NOAA

National Environmental Satellite,  
Data and Information Service

National Weather Service



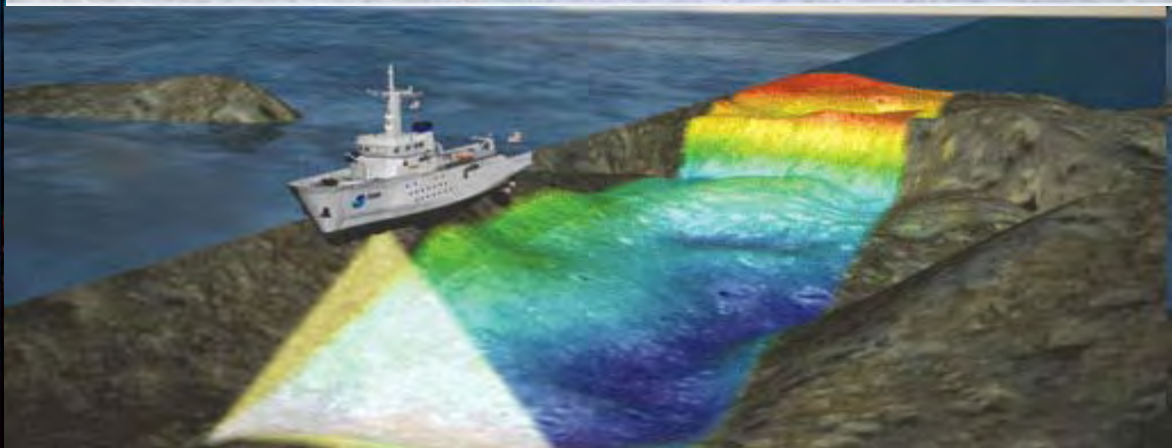




NOAA

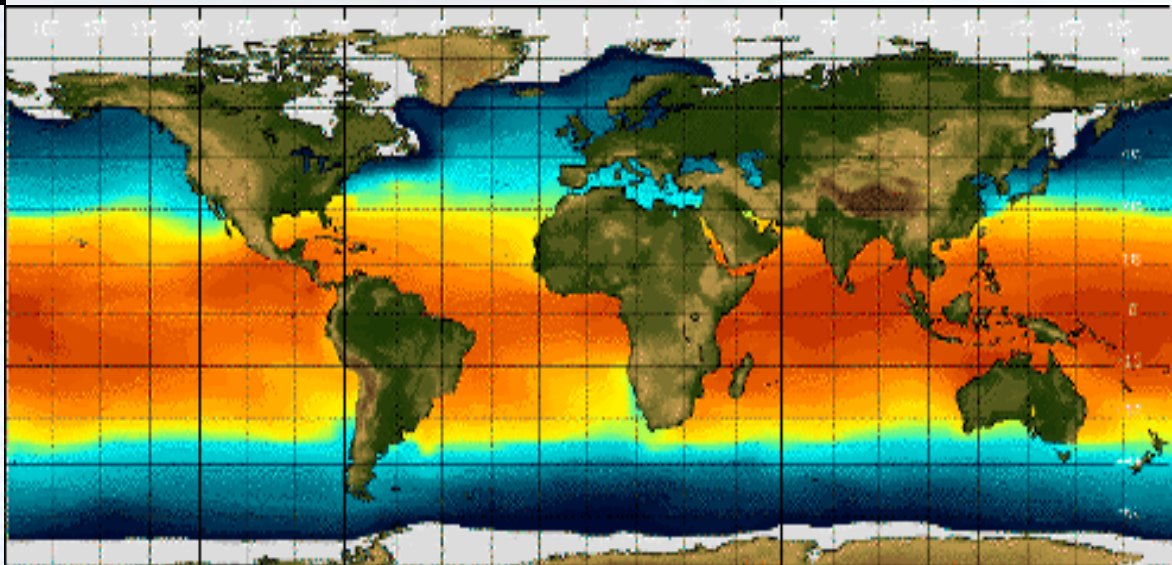


Jim Raymont - Florida Keys NMS



National Ocean Service

Office of Oceanic and  
Atmospheric  
Research





# NOAA Fisheries Service

## Mission

Stewardship of living marine resources through science-based conservation and management and the promotion of healthy ecosystems for the benefit of all Americans.

Dr. Jim Balsiger,  
Assistant Administrator (Acting)





# NOAA Office of Marine and Aviation Operations



# NOAA In Oregon

## *Portland*

- National Marine Fisheries Service (NMFS) Northwest Region Portland Office, with field offices in Roseburg and La Grande
- National Weather Service (NWS), Weather Forecast Office, Northwest River Forecast Center with additional Forecast offices in Medford and Pendleton.

## *Charleston*

- National Ocean Service (NOS), Office of Ocean and Coastal Resource Management, South Slough National Estuarine Research Reserve

## *Hammond*

- *NMFS- Northwest Fisheries Science Center,*
- *Point Adams (Hammond) Research Station*

## *State wide*

- NMFS- Office of Law Enforcement
- Weather and Data buoy observing sites







# NOAA In Newport

## *Newport*

NMFS Northwest Fisheries Science Center Newport Field Station hosting Fish Ecology, Conservation Biology, Environmental Conservation, Fisheries Resource Assessment Management, and CMI Divisions

NMFS Alaska Fisheries Science Center, Fisheries Behavioral Ecology Program

NMFS— Office of Law Enforcement

Office of Oceanic and Atmospheric Research (OAR), Office of Ocean Exploration and Research, VENTS Program

OAR Pacific Marine Environmental Laboratory, Ocean Environment Research Division

Partnerships with Oregon State University

Oregon Sea Grant

Cooperative Institute for Marine Resource Studies (CIMRS)

The Cooperative Institute for Oceanographic Satellite Studies (CIOS)

# NOAA Funding in Newport



NMFS Northwest Fisheries Science Center

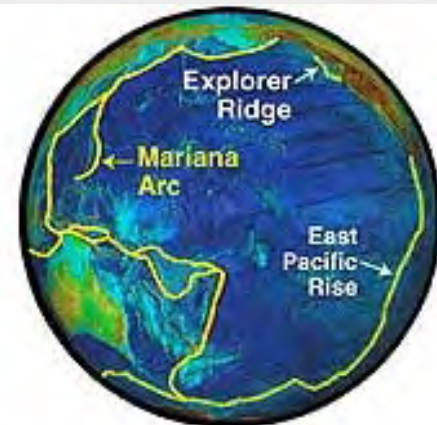
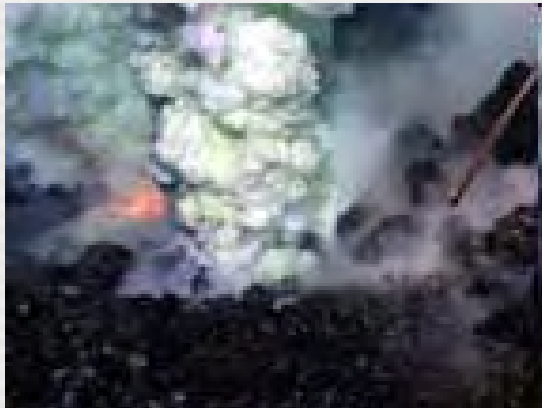
\$5,492,000

NMFS Alaska Fisheries Science Center

\$1,250,000

OAR—FVEL Vents Program

\$1,072,361





# NOAA's Strategic Plan

Ecosystems

Climate

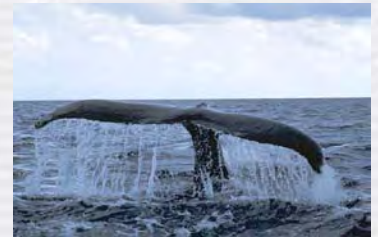
Weather and Water

Commerce and Transportation

Cross-Cutting Priorities

- Integrated global environmental observation and data management system
- Environmental literacy, outreach, and education
- Sound, state-of-the-art research
- International cooperation and collaboration
- Homeland Security

Organizational Excellence





# NOAA Fisheries Service

How We Fit In NOAA...

## Goal 1: Ecosystems

- Habitat Restoration
- Corals
- Invasive Species
- Protected Species Management
- Fisheries Management
- Aquaculture
- Enforcement
- Ecosystem Research

## Goal 2: Climate

- Assess and Predict

## Programs to Support All Goals

- Facilities
- Platforms (Ships/Aircraft)







# NOAA Fisheries Service: History

NOAA Fisheries is the oldest conservation agency in the Nation . . . .

1871 - Commission of Fish and Fisheries

1903 - Bureau of Fisheries (DOC & Labor)

1931 – Montlake Laboratory opens

1939 - Transferred to Dept. of Interior

1956 - Bureau of Commercial Fisheries

1970 - Executive Order 11564 creates NOAA and National Marine Fisheries Service

2007 – NOAA Celebrated 200th Anniversary



# NOAA Fisheries : Stewardship Authorities

Magnuson-Stevens Fishery Conservation and Management Act

Marine Mammal Protection Act

Endangered Species Act

National Environmental Policy Act

Anadromous Fish Conservation Act

Interjurisdictional Fisheries Act

NOAA Fisheries Program Authorization Act

Clean Water Act

National Aquaculture Act

Paperwork Reduction Act

Administrative Procedures Act

... and over 100 other Laws





# NOAA Fisheries: Northwest Fisheries Science Center



Mukilteo  
Research  
Station

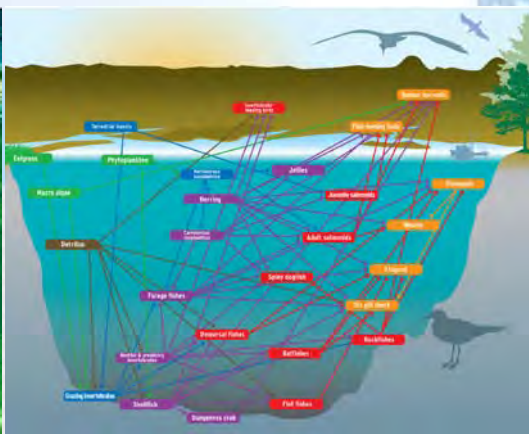
Manchester \*  
Research Station

\* Montlake Facility

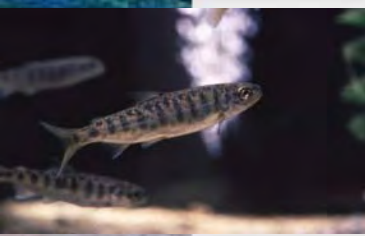
\* Point Adams  
Research Station

\* Pasco  
Research  
Station

\* Newport Research Station



## Ecosystem-based Management for the California Current Large Marine Ecosystem



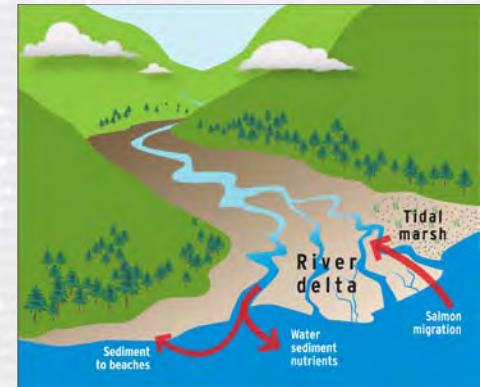
## Recovery, Rebuilding, and Sustainability of Marine and Anadromous Species



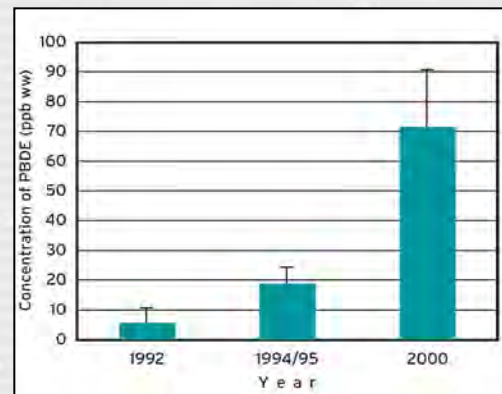
## NWFSC STRATEGIC RESEARCH PLAN Northwest Fisheries Science Center



## Habitats to Support Sustainable Fisheries and Recovered Populations



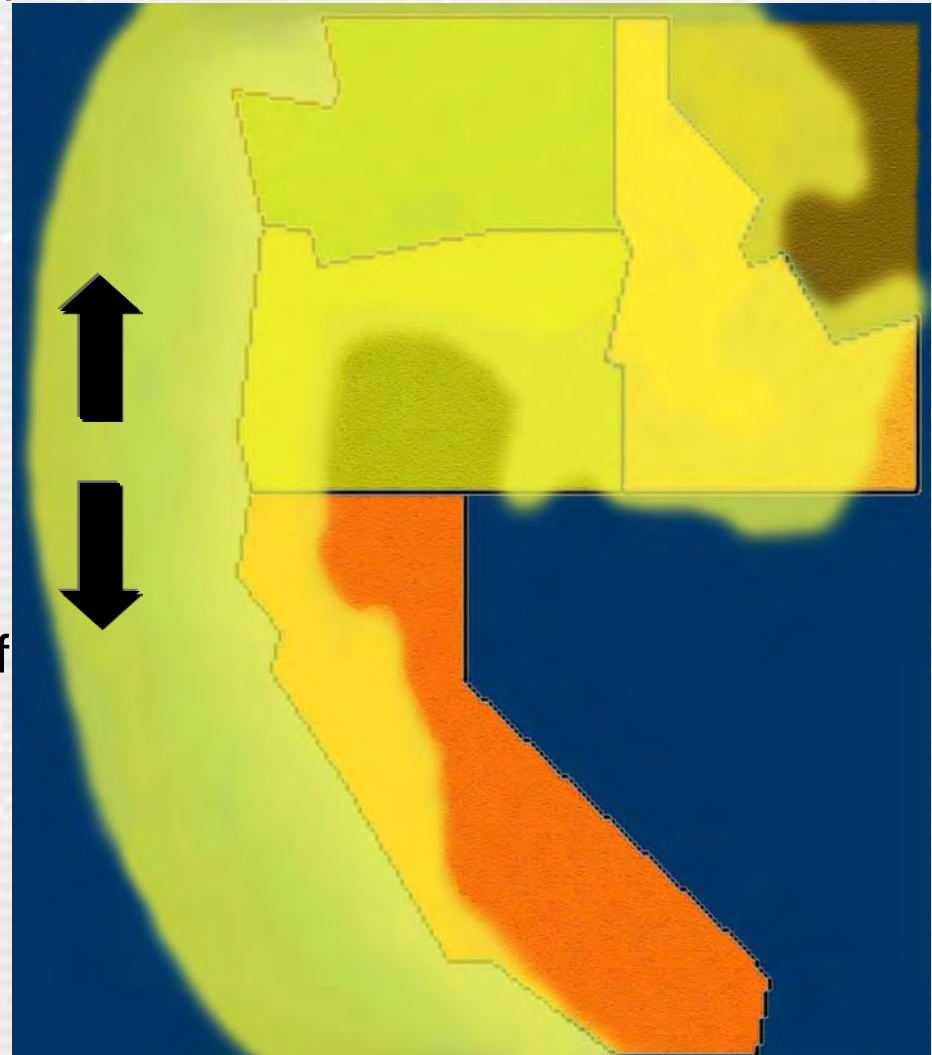
## Oceans and Human Health, Climate Issues





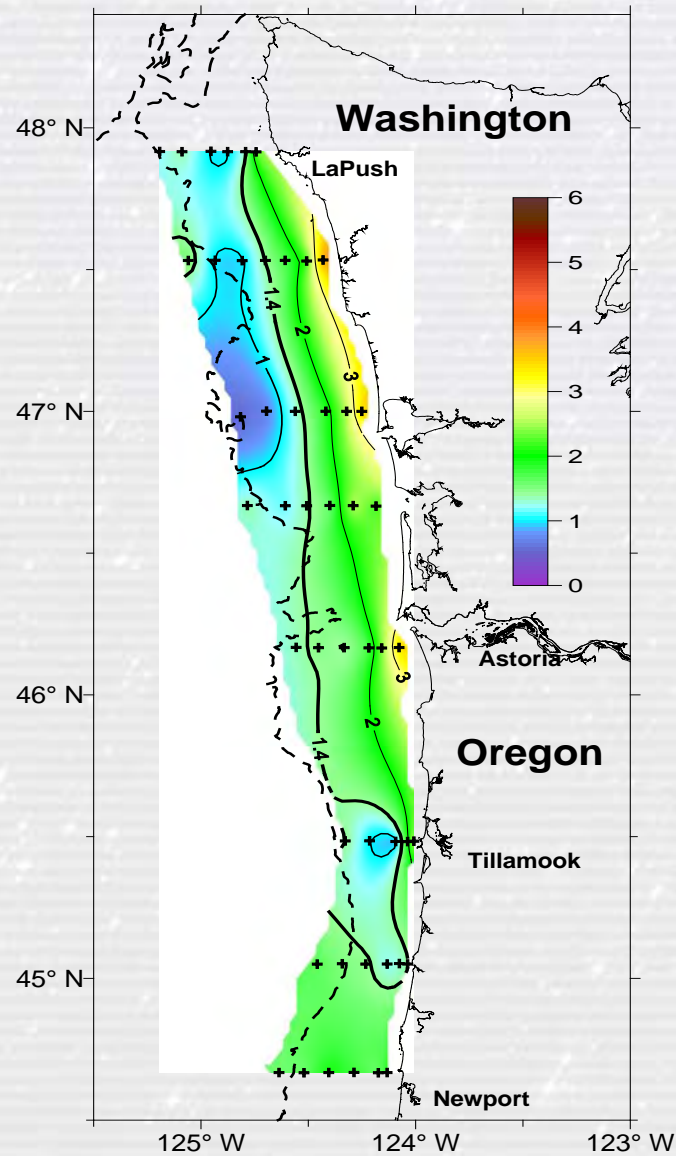
# RESOURCE CHALLENGES & OPPORTUNITIES

- 28 salmon and steelhead ESUs listed as endangered or threatened
- 4 commercially fished groundfish species listed as overfished; 3 rebuilding
- Southern Resident killer whales listed as endangered under the Endangered Species Act
- Over 150,000 square miles of ocean and freshwater habitat



# NOAA Fisheries : Ocean Conditions

September 22 - 29, 2009  
Minimum Oxygen Values (ml/L)



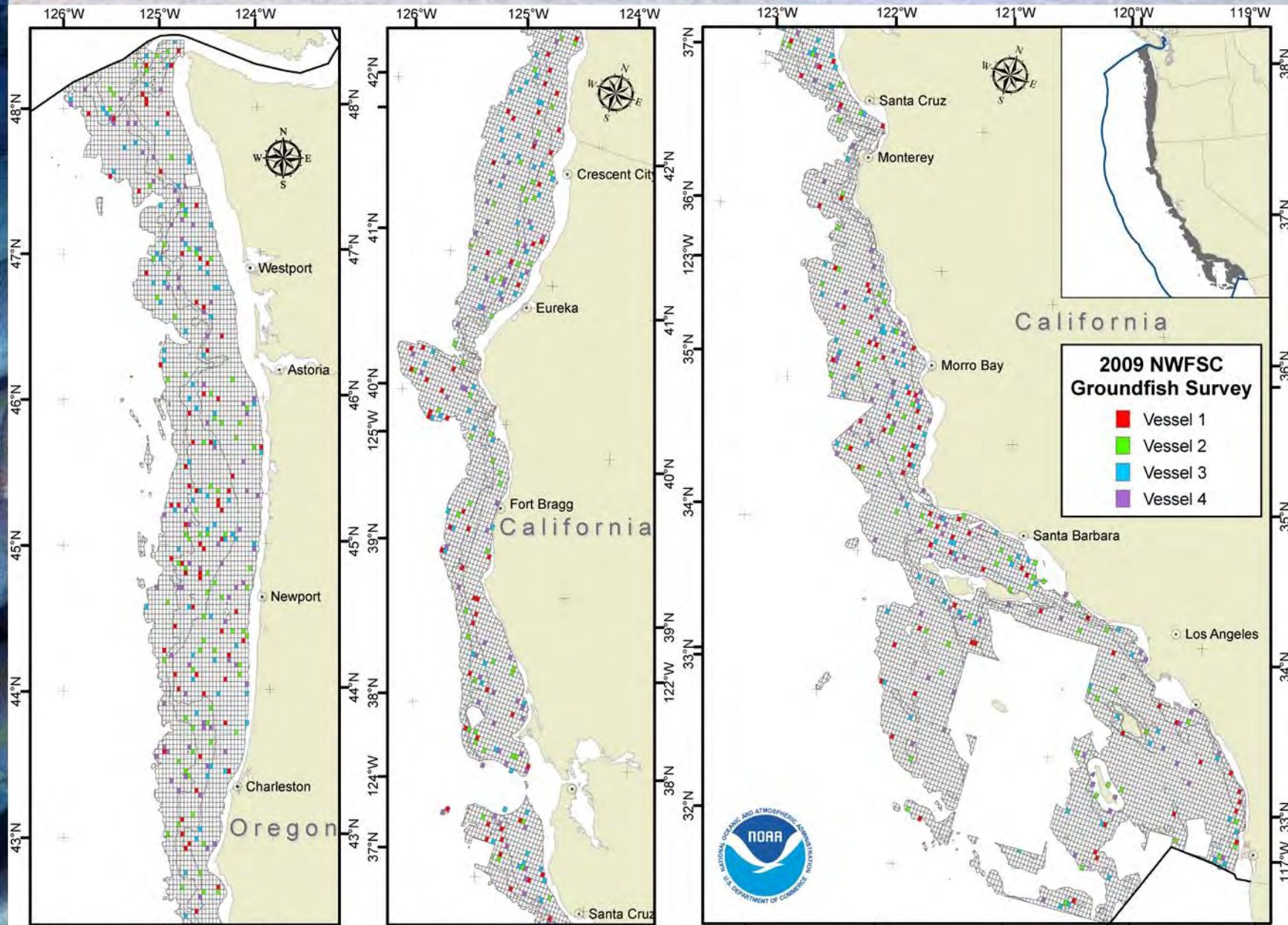


# NOAA Fisheries : Ocean Conditions

	Juvenile migration year				Forecast of adult returns	
	2005	2006	2007	2008	Coho 2009	Chinook 2010
<b>Large-scale ocean and atmospheric indicators</b>						
PDO (May-Sep)	■	■	■	■	●	●
MEI (annual)	■	■	■	■	●	●
<b>Local and regional physical indicators</b>						
Sea surface temperature anomalies	■	■	■	■	●	●
Coastal upwelling	■	■	■	■	●	●
Physical spring transition	■	■	■	■	●	●
Deep water temperature and salinity	■	■	■	■	●	●
<b>Local biological indicators</b>						
Copepod biodiversity	■	■	■	■	●	●
Northern copepod anomalies	■	■	■	■	●	●
Biological spring transition	■	■	■	■	●	●
June spring Chinook	■	■	■	■	--	●
September Coho	■	■	■	■	●	--

Key	■ good conditions for salmon	● good returns expected
	■ intermediate conditions for salmon	-- no data
	■ poor conditions for salmon	● poor returns expected

# WC Groundfish Survey





# NMFS Alaska Fisheries Science Center – Fisheries Behavioral Ecology Program



The Fisheries Behavioral Ecology Program conducts experimental research related to the processes that influence capture of fishes with trawls, traps, and long-line gear.

## Recent Research Projects:

Variation in factory thresholds.

Effects of light level and hunger on bait attack.

Effects of temperature and feeding history.

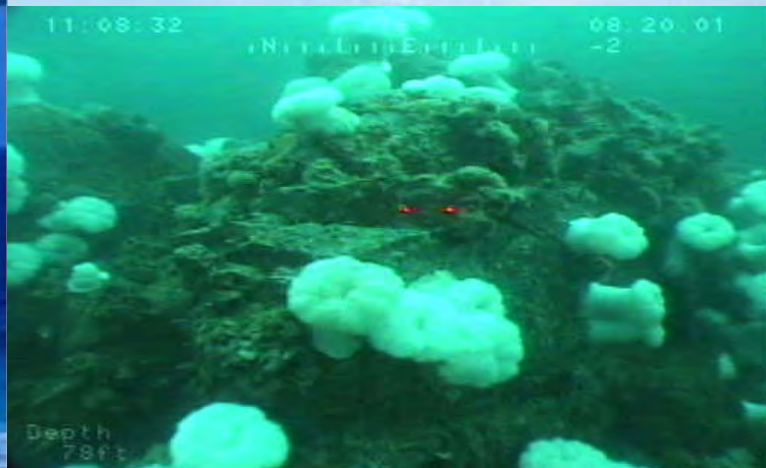
Effects of light level on orientation and passage of walleye pollock through trawl mesh.

Response of flatfishes to temperature and feeding history on bait detection,

Flatfish behavior to trawl foot-rope configuration.



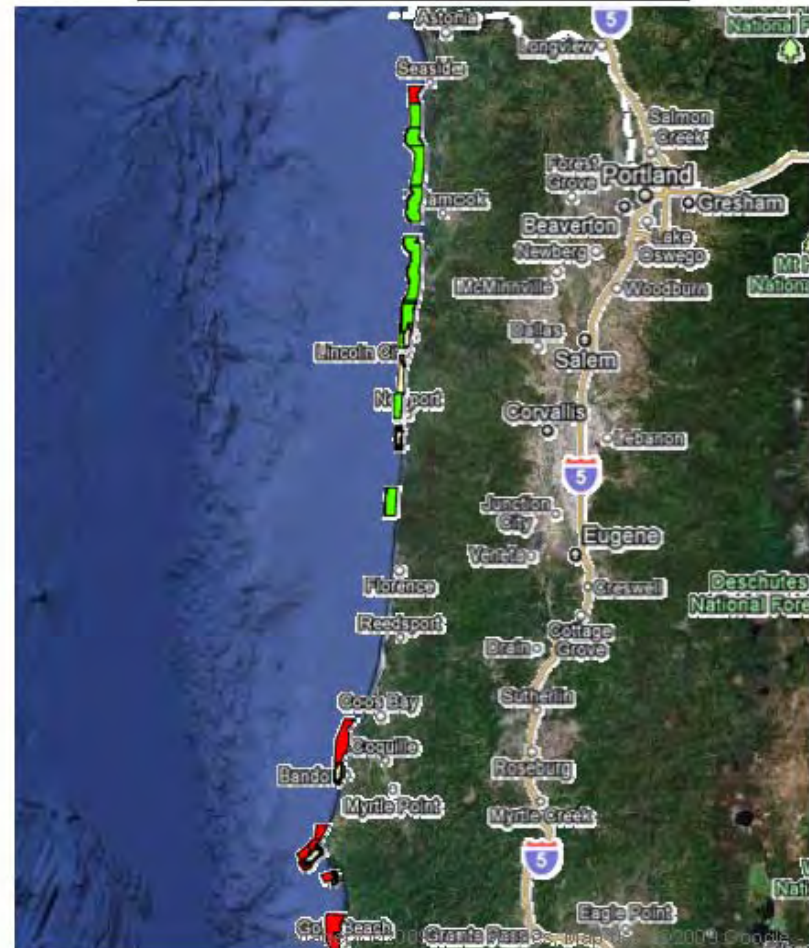
# NOAA Support of Mapping Effort



NOAA awarded \$5 million to assist in the joint mapping effort. The State of Oregon provided \$1.3 million in funding to OSU. Data from the surveys will update nautical charts that currently contain depth information acquired before 1939.

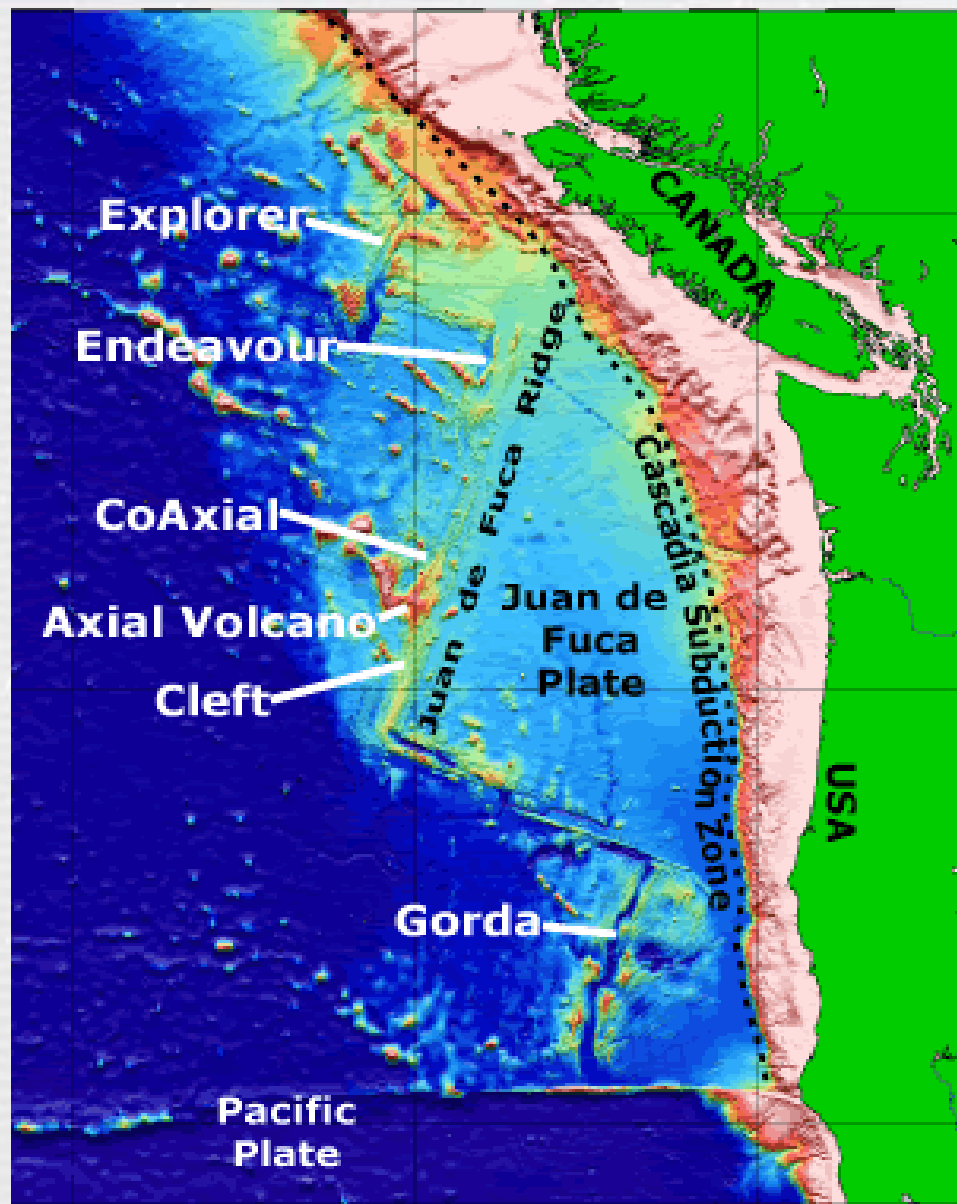
## Territorial Sea Mapping Areas

### Progress





# NOAA PMEL Vents Program



Current Research on Methane sources feeding cold seeps on the shelf and upper continental slope off central Oregon

Deep sea sources for biomedical research



# NOAA: The Future







# Questions?

