

## Ocean Policy Advisory Council Public Comment

Newport, OR

04/09/12

Rick Williams, SAIC, Oregon Military Dept.

"I'm a resident of Oregon City, Oregon. I've been an ocean engineer, deep-sea salvage diver, and navy captain. The Industry Advisory Group submitted a letter to OPAC to not use the red, yellow, green color system. It has implied meanings, I would like OPAC to consider that. Speaking as a representative of the Oregon Military Dept. Camp Rilea is an existing beneficial user. Camp Clatsop was established 1927 as a defense site and is a user of the Territorial Sea because of the live rifle range. It contributes 175,000 non consumptive users each year and budget of 15 million dollars into the Clatsop County.

From OWET perspective, we support the TSP process and think we have accomplished a lot, starting with the Gov's Executive Order saying to minimize adverse impacts. It started with figuring all the areas we don't want and calling the leftovers, "industry opportunity areas." They were not "opportunity areas" they were the leftovers. OWET then submitted an industry suitability map. From what we saw today presented as opportunity zones, they would be considered "stranded sites" with no cable corridor. We started working to identify places, we still need to do that. Need cable corridor, sited according to TSP Chp. 4, need cable easements."

John Schaad, BPA, TSPAC

"Working on some written comments. The grid connections would need right of way easements. Who will apply for those? Maybe some ways in the existing land use laws to facilitate cable easements. Would the easements have to be put in place by the first developer, what about developers that come after that and need to use the same corridor? State law says that cables above 600v need to be maintained by public utility, who will do that for undersea cables? Should the state, developer, or local utilities? These are questions we need to answer. If the generation is connected and is above a certain load, it comes with regulations from the NERC and Western electric Coordinating Council, which have pretty strong requirements for compliance."

Dave Yamamoto, Pacific City Woods Planning Committee, TSPAC

"I am gratified the ways things are moving forward involving view sheds and involvement of local residents of the coast. I think we are moving in the right direction. I will have comments about the Mass and Rhode Island plans that I think we can adopt, those will wait for the TSPAC process. Much work to be done. Things are moving along as they should be."

Peg Reagan, Conservation Leaders Network

"The site specific fishing information should be included in Marine Conservation Area (Level 1 and Level 2), as well as areas that are in Level 3 because you don't have information. I do

withdraw recommendation 7, that Jetties be used, because they are used as non-consumptive recreational areas [submitted comments]. Unless they are not used for recreation or the technology would not disturb that recreation. What I'm presenting is not in conflict with the draft plans provided except in the ways I just stated."

April 8, 2012

To the Ocean Policy Advisory Council:

To make good decisions about potential wave energy sites and to be consistent with the way you went about choosing potential marine reserve sites, I suggest you:

- 1) add Pacific City dory fleet information to Level 1
- 2) add Fishcred crab information to Level 1
- 3) add any other site-specific fishing information you've received to Level 1
- 4) take all Level 1 and Level 2 areas off the table, as well as all Level 3 areas that are Level 3 because there is not yet enough data to know where they should be placed
- 5) devote your energies to the areas that remain
- 6) select the existing Gardiner site, the OSU site near Yaquina Head, and the Camp Rilea site—as long as they are in the remaining available areas
- 7) select jetties and other already industrialized sites as long as they are in the remaining available areas (While these potential sites were dismissed earlier in the process, they are the only areas it was generally agreed would cause no harm to the environment nor to fishing. As we've been reminded throughout the process, the industry is young and we can't imagine the upcoming technological advances. While we may accept that the federal government is unlikely to spend the resources to repair Oregon's jetties, we should not assume that, sometime in the future, there would not be industry interest in financing the rebuilding of certain jetties in exchange for the ability to place wave energy devices upon them.)
- 8) ensure that the approval of site-specific applications consider impacts to endangered species, important habitat including that necessary for productive life histories of fish protected by Level 1 and Level 2 and other important Goal 19 resources including dispersed recreation and view-sheds
- 9) go out to the public after clearly identifying the areas OPAC thinks should be available for wave energy facilities.

*I stand  
corrected -  
jetties are  
used for  
recreation -  
both  
consumptive  
&  
non-  
consumptive.*

Thank you for the opportunity to provide my input.

Peg Reagan, Executive Director

Conservation Leaders Network

Laura Anderson, FISHCRED

"FISHCRED did release the crab data maps to the public process and are available on

marine map. The letter states that we believe that it will help improve the interpretation of fishing value maps associated with aggregation of fishing sectors with equal weighting, which might have undervalued highly valued fishing grounds. I encourage you to look at how the new data overlap with existing Level 1 and 2 fishing areas. Some areas overlap and some areas are newly identified. The board of FISHCRED is expecting that the use of this data will help how we identify valuable fishing grounds for Oregon.”

Stephanie Webb, POORT

“We understand that ODFW DLCD and TSPWG has done their best for outreach. In Curry County, there are no resources to do this outreach at the local level. The Ocean Resources Team had initiated a process to gather local knowledge and buy in and had mapped uses and resources in a process similar to that of the state. 17 members of the local community submitted areas that would work as opportunity zones from the local perspective. I am submitting to the public record, our comments from the Ocean Resources Team and seven fishermen, which will highlight important areas valuable to the fleet, city, and Resource Team. I also submitted maps that identify goal 19 resources from the local level. A significant portion of crab landings north of Cape Blanco from 10-40 fathoms it brought \$30 million dollars into our community last year and we do not want to see that developed for marine renewable energy. Additionally, we do not want our jetty excluded [submitted comments].”



## **Port of Port Orford**

Post Office Box 490  
Port Orford, Oregon 97465

Telephone (541) 332-7121  
FAX (541) 332-7121

### **MEMORANDUM**

**TO:** OPAC Executive Committee - TSP Working Group

**FROM:** The Port of Port Orford – Gary Anderson

**CC:** Port Orford Ocean Resource Team

**DATE:** April 3, 2012

**SUBJECT:** OR TSP Planning Public Comment – Data Gaps

The Port of Port Orford is tasked under Section 777 of ORS with encouraging commercial and industrial development. The Port would like to explore technologies that combine an existing jetty with wave energy structures for generating renewable energy, such as a wave generation breakwater device.

Our interest is due to a potential project that can

- rebuild or reconstruct the Port Orford jetty,
- provide income to the Port of Port Orford, and
- provide better protection for boats and possibly reduce sand accumulation.

The current maps surrounding our jetty represent level 2 resources for all categories. We do not want the maps to hinder exploring a structure that is limited to the jetty foot print and I would like to see this add value to the fishing fleet as well as the Port of Port Orford

Sincerely,

A handwritten signature in cursive script, appearing to read "Gary Anderson".

Gary Anderson  
The Port of Port Orford, Manager

## MEMORANDUM

**TO:** OPAC Executive Committee - TSP Working Group

**FROM:** Port Orford Ocean Resource Team

**DATE:** April 3, 2012

**SUBJECT:** OR TSP Planning Public Comment – Data Gaps

### GENERAL COMMENTS

1. Meaningful engagement of coastal communities in the Territorial Sea Planning process is crucial to the success of identifying areas of opportunity for wave energy sites in Oregon's nearshore waters. POORT recognizes the challenges for ODFW, DLCD and the TSP WG to provide outreach to coastal communities. We understand some counties are providing leadership for their communities. With no local leadership from Curry County, POORT has stepped in to fill the gap by engaging the citizens of Port Orford in community based marine spatial planning through funding and capacity efforts of our own. This outreach includes
  - updates of the state's TSP process;
  - gathering local knowledge and buy-in;
  - compiling data using similar methods of the state, such as Ecotrust fishing maps, Marxan analysis and DLCD geo-databases of existing uses; and
  - indentifying locally supported areas of opportunity for wave energy within the Port Orford Stewardship Area
2. POORT has been working with the community and fishing fleet of Port Orford to provide information on the TSP that will increase interest in participating in this public process. To submit for the public record today, I am providing these comments in written and oral form as well as letters from the Port of Port Orford, The City of Port Orford and six fishermen. These letters represent the opinions of those who will be directly affected by the decisions and recommendations that result from this process.
3. POORT is submitting maps that include areas of opportunity for wave energy that were developed through our local public process.
  - Commercial Fishing, Nearshore Ecological Data Atlas and Beneficial Uses – protecting 70% and 80% of fishing.
  - Areas of Opportunity – Public Comment Proposal
4. The public needs a spatially explicit map to take the discussion to local communities for detailed site specific commenting.

CONCERNS WITH CLASSIFICATION SYSTEMS (on back page)

**MEMORANDUM**

**TO:** OPAC Executive Committee - TSP Working Group

**FROM:** Jeff Miles – Top Gun

**CC:** Port Orford Ocean Resource Team

**DATE:** April 3, 2012

**SUBJECT:** OR TSP Planning Public Comment – Data Gaps

When looking at the fishing resources map, I, JEFF MILES feel our crabbing grounds are under-valued and misrepresented. In 2011, ODFW commercial landings data revealed that over 1.178 M lbs in crab that averaged \$2.648 per pound was caught from the Port of Port Orford. This puts over \$3.1 M in our fleets' and communities pockets. When considering Goal 19 and the criteria for fishing resources: 1) value; 2) volume; 3) individuality of ports and 4) sectors; crabbing is the highest volume and the highest valued fishery in the Port of Port Orford.

A significant portion of my crab landings and salmon trolling occur just north of Cape Blanco to Croft Lake, starting at 10 fathoms and going out to 35 fathoms; also, from just south of the Port Orford Dock to the Rogue River, starting from the beach to 45 fathoms. These areas are currently labeled as level 3 on the fishing resources map.

I would like to explore technologies that combine an existing jetty with wave energy structures for generating renewable energy. Our interest is due to a potential project that can rebuild or reconstruct the Port Orford jetty. However, the current maps surrounding our jetty represent level 2 resources for all categories. We do not want the maps to hinder exploring a structure that is limited to the jetty foot print and I would like to see this add value to the fishing fleet as well as the Port of Port Orford

Sincerely,

A handwritten signature in black ink, appearing to read "JM 3 2012".

Jeff Miles

**MEMORANDUM**

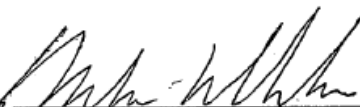
**TO:** OPAC Executive Committee - TSP Working Group

**FROM:** Mike Ashdown

**CC:** Port Orford Ocean Resource Team

**DATE:** April 3, 2012

**SUBJECT:** OR TSP Planning Public Comment – Data Gaps

When looking at the fishing resources map,  feel our crabbing grounds are under-valued and misrepresented. In 2011, ODFW commercial landings data revealed that over 1.178 M lbs in crab that averaged \$2.648 per pound was caught from the Port of Port Orford. This puts over \$3.1 M in our fleets' and communities pockets. When considering Goal 19 and the criteria for fishing resources: 1) value; 2) volume; 3) individuality of ports and 4) sectors; crabbing is the highest volume and the highest valued fishery in the Port of Port Orford.

A significant portion of my crab landings and salmon trolling occur just north of Cape Blanco to Four Mile Creek, starting at 10 fathoms and going out to 35 fathoms; also, from just south of the Port Orford Dock to the Rogue River, starting from the beach to 50 fathoms. These areas are currently labeled as level 3 on the fishing resources map.

I would like to explore technologies that combine an existing jetty with wave energy structures for generating renewable energy. Our interest is due to a potential project that can rebuild or reconstruct the Port Orford jetty. However, the current maps surrounding our jetty represent level 2 resources for all categories. We do not want the maps to hinder exploring a structure that is limited to the jetty foot print and I would like to see this add value to the fishing fleet as well as the Port of Port Orford

Sincerely,

Mike Ashdown



**MEMORANDUM**

**TO:** OPAC Executive Committee - TSP Working Group

**FROM:** Chris Aiello - J & C

**CC:** Port Orford Ocean Resource Team

**DATE:** April 3, 2012

**SUBJECT:** OR TSP Planning Public Comment - Data Gaps

When looking at the fishing resources map, I, CHRIS AIELLO feel our crabbing grounds are under-valued and misrepresented. In 2011, ODFW commercial landings data revealed that over 1.178 M lbs in crab that averaged \$2.648 per pound was caught from the Port of Port Orford. This puts over \$3.1 M in our fleets' and communities pockets. When considering Goal 19 and the criteria for fishing resources: 1) value; 2) volume; 3) individuality of ports and 4) sectors; crabbing is the highest volume and the highest valued fishery in the Port of Port Orford.

A significant portion of my crab landings and salmon trolling occur just north of Cape Blanco to 2 Mile Creek, starting at 5 fathoms and going out to 35 fathoms; also, from just south of the Port Orford Dock to the Rogue River, starting from the beach to 45 fathoms. These areas are currently labeled as level 3 on the fishing resources map.

I would like to explore technologies that combine an existing jetty with wave energy structures for generating renewable energy. Our interest is due to a potential project that can rebuild or reconstruct the Port Orford jetty. However, the current maps surrounding our jetty represent level 2 resources for all categories. We do not want the maps to hinder exploring a structure that is limited to the jetty foot print and I would like to see this add value to the fishing fleet as well as the Port of Port Orford

Sincerely,

 4/4/12

Chris Aiello



**MEMORANDUM**

**TO:** OPAC Executive Committee - TSP Working Group

**FROM:** Glen Burkhaw – Eagle III

**CC:** Port Orford Ocean Resource Team

**DATE:** April 3, 2012

**SUBJECT:** OR TSP Planning Public Comment – Data Gaps

When looking at the fishing resources map, I, Glen Burkhaw feel our crabbing grounds are under-valued and misrepresented. In 2011, ODFW commercial landings data revealed that over 1.178 M lbs in crab that averaged \$2.648 per pound was caught from the Port of Port Orford. This puts over \$3.1 M in our fleets' and communities pockets. When considering Goal 19 and the criteria for fishing resources: 1) value; 2) volume; 3) individuality of ports and 4) sectors; crabbing is the highest volume and the highest valued fishery in the Port of Port Orford.

A significant portion of my crab landings and salmon trolling occur at Fox Rock to Tower Row River, starting at 18 fathoms and going out to 48 fathoms; also, from just south of the Port Orford Dock to the Rogue River, starting from the beach to 44 fathoms. These areas are currently labeled as level 3 on the fishing resources map.

I would like to explore technologies that combine an existing jetty with wave energy structures for generating renewable energy. Our interest is due to a potential project that can rebuild or reconstruct the Port Orford jetty. However, the current maps surrounding our jetty represent level 2 resources for all categories. We do not want the maps to hinder exploring a structure that is limited to the jetty foot print and I would like to see this add value to the fishing fleet as well as the Port of Port Orford

Sincerely,



Glen Burkhaw

MEMORANDUM

**TO:** OPAC Executive Committee - TSP Working Group

**FROM:** Nick Bordelon

**CC:** Port Orford Ocean Resource Team

**DATE:** April 3, 2012


**SUBJECT:** OR TSP Planning Public Comment – Data Gaps

When looking at the fishing resources map, I, Nick Bordelon feel our crabbing grounds are undervalued and misrepresented. In 2011, ODFW commercial landings data revealed that over 1.178 M lbs in crab that averaged \$2.648 per pound was caught from the Port of Port Orford. This puts over \$3.1 M in our fleets' and communities pockets. When considering Goal 19 and the criteria for fishing resources: 1) value; 2) volume; 3) individuality of ports and 4) sectors; crabbing is the highest volume and the highest valued fishery in the Port of Port Orford.

A significant portion of my crab landings and salmon trolling occur just south of Cape Blanco to 2 Mile Creek, starting at 5 fathoms and going out to 40 fathoms; also, from just south of the Port Orford Dock to the Rogue River, starting from the beach to 40 fathoms. These areas are currently labeled as level 3 on the fishing resources map.

I would like to explore technologies that combine an existing jetty with wave energy structures for generating renewable energy. Our interest is due to a potential project that can rebuild or reconstruct the Port Orford jetty. However, the current maps surrounding our jetty represent level 2 resources for all categories. We do not want the maps to hinder exploring a structure that is limited to the jetty foot print and I would like to see this add value to the fishing fleet as well as the Port of Port Orford

Sincerely,

  
Nick Bordelon

**MEMORANDUM**

**TO:** OPAC Executive Committee - TSP Working Group

**FROM:** Joel Purkey

**CC:** Port Orford Ocean Resource Team

**DATE:** April 3, 2012

**SUBJECT:** OR TSP Planning Public Comment – Data Gaps

When looking at the fishing resources map, I, Joel M Purkey feel our crabbing grounds are under-valued and misrepresented. In 2011, ODFW commercial landings data revealed that over 1.178 M lbs in crab that averaged \$2.648 per pound was caught from the Port of Port Orford. This puts over \$3.1 M in our fleets' and communities pockets. When considering Goal 19 and the criteria for fishing resources: 1) value; 2) volume; 3) individuality of ports and 4) sectors; crabbing is the highest volume and the highest valued fishery in the Port of Port Orford.

A significant portion of my crab landings and salmon trolling occur just north of Cape Blanco to Croft Lake, starting at 10 fathoms and going out to 50 fathoms; also, from just south of the Port Orford Dock to the Rogue River, starting from the beach to 45 fathoms. These areas are currently labeled as level 3 on the fishing resources map.

I would like to explore technologies that combine an existing jetty with wave energy structures for generating renewable energy. Our interest is due to a potential project that can rebuild or reconstruct the Port Orford jetty. However, the current maps surrounding our jetty represent level 2 resources for all categories. We do not want the maps to hinder exploring a structure that is limited to the jetty foot print and I would like to see this add value to the fishing fleet as well as the Port of Port Orford

Sincerely,



Joel Purkey

**MEMORANDUM**

**TO:** OPAC Executive Committee - TSP Working Group

**FROM:** Jim Auburn, Mayor, City of Port Orford

**CC:** Port Orford Ocean Resource Team

**DATE:** April 3, 2012

**SUBJECT:** OR TSP Planning Public Comment

On behalf of the City of Port Orford, I would like to contribute comment in the form of questions that I feel are still unanswered.

1. What wave energy technologies are compatible and could coexist with fishing and other uses?
2. How much balance do we have to have between exclusion and development zones (ie. 50:50, 90:10, 99:1)?
3. Are there additional opportunities with wave energy devices that we can take advantage of such as protecting our port with a wave energy breakwater?
4. What beneficial uses have to be exclusive? Can some area be designated as beneficial for multiple uses?

Sincerely,



Jim Auburn

Mayor, City of Port Orford

**MEMORANDUM**

**TO:** OPAC Executive Committee - TSP Working Group

**FROM:** Mike Murphy, City Administrator, City of Port Orford

**CC:** Port Orford Ocean Resource Team

**DATE:** April 3, 2012

**SUBJECT:** OR TSP Planning Public Comment – Data Gaps

When looking at the fishing resources map, I feel our crabbing grounds are under-valued and misrepresented. In 2011, ODFW commercial landings data revealed that over 1.178 M lbs in crab that averaged \$2.648 per pound was caught from the Port of Port Orford. This puts over \$3.1 M in our fleets' and communities pockets. When considering Goal 19 and the criteria for fishing resources: 1) value; 2) volume; 3) individuality of ports and 4) sectors; crabbing is the highest volume and the highest valued fishery in the Port of Port Orford. A significant portion of our crab landings and salmon trolling occur in the area above (north of) Cape Blanco, which is currently labeled as low value level 3 on the fishing resources map.

I feel the human cost of the decisions reflected on these maps and infringement of vital fishing grounds should be considered. The impacts of changing these grounds are very real to the individuals whose livelihood depends upon them. These considerations are often over looked.

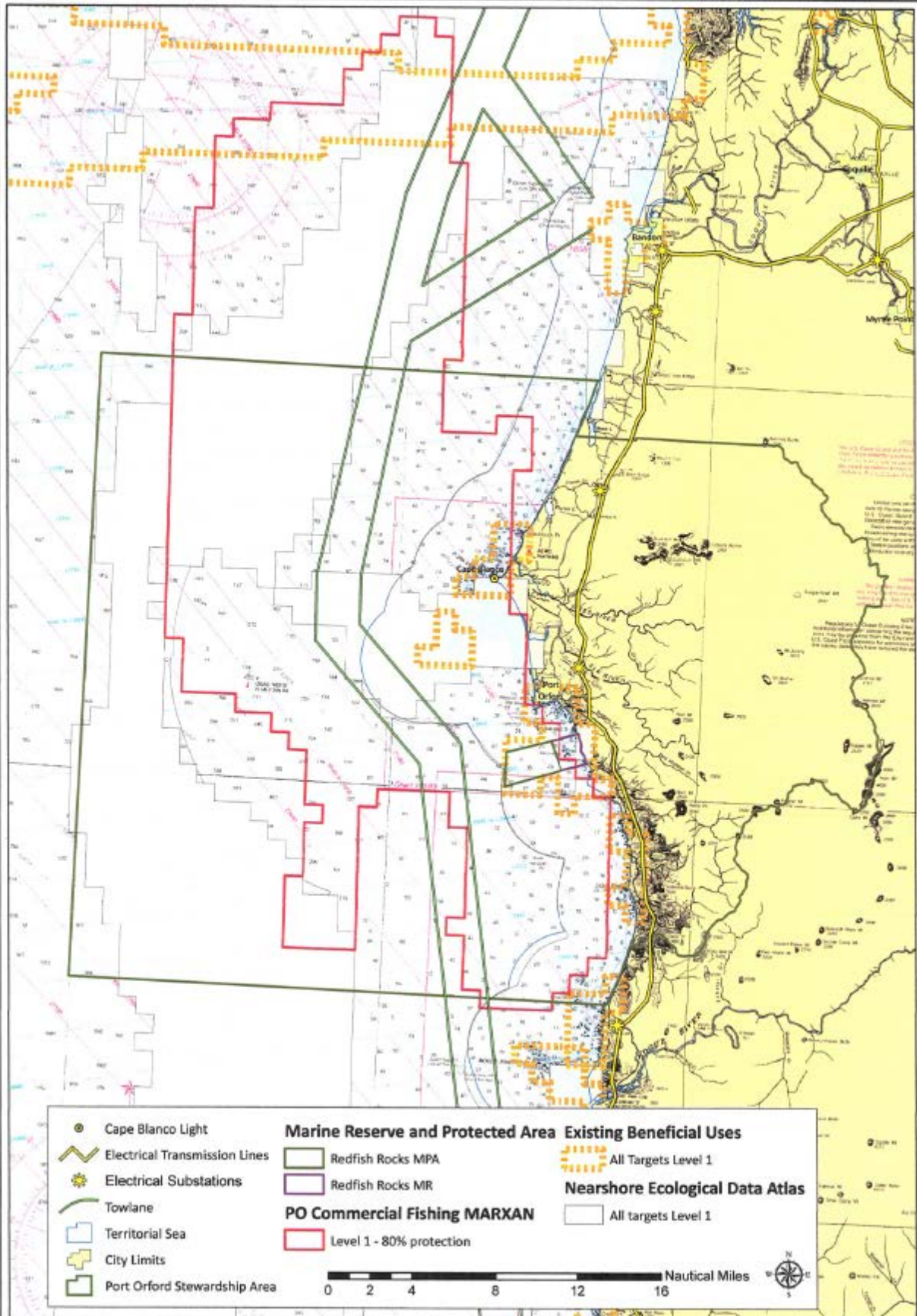
Sincerely,

A handwritten signature in black ink, appearing to read "Michael Murphy". The signature is fluid and cursive, with the first name being more prominent.

Michael Murphy, City Administrator  
City of Port Orford

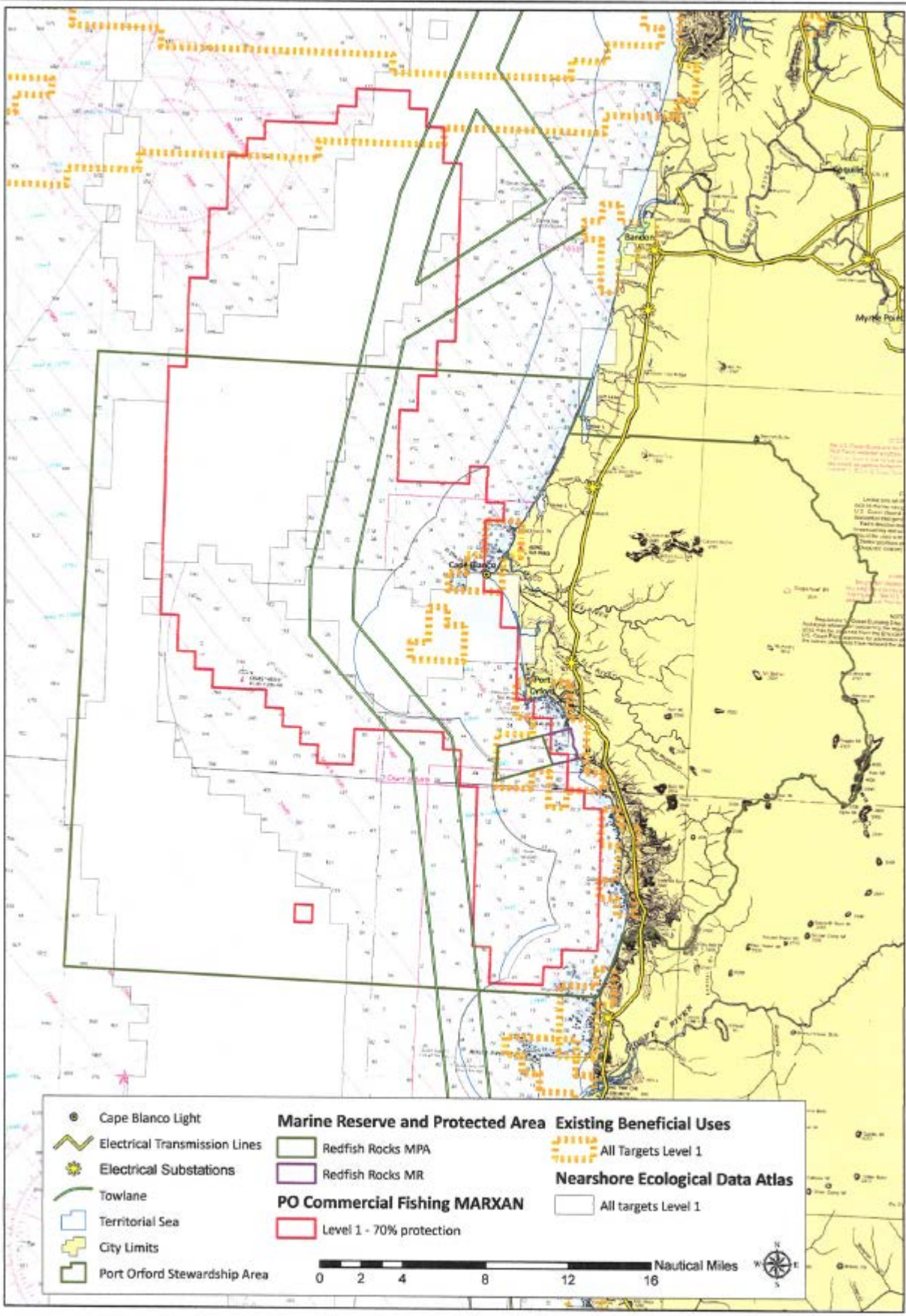
# Port Orford Stewardship Area Marine Spatial Planning Workshop

## Commercial Fishing, Nearshore Ecological Data Atlas and Beneficial Uses



# Port Orford Stewardship Area Marine Spatial Planning Workshop

## Commercial Fishing, Nearshore Ecological Data Atlas and Beneficial Uses

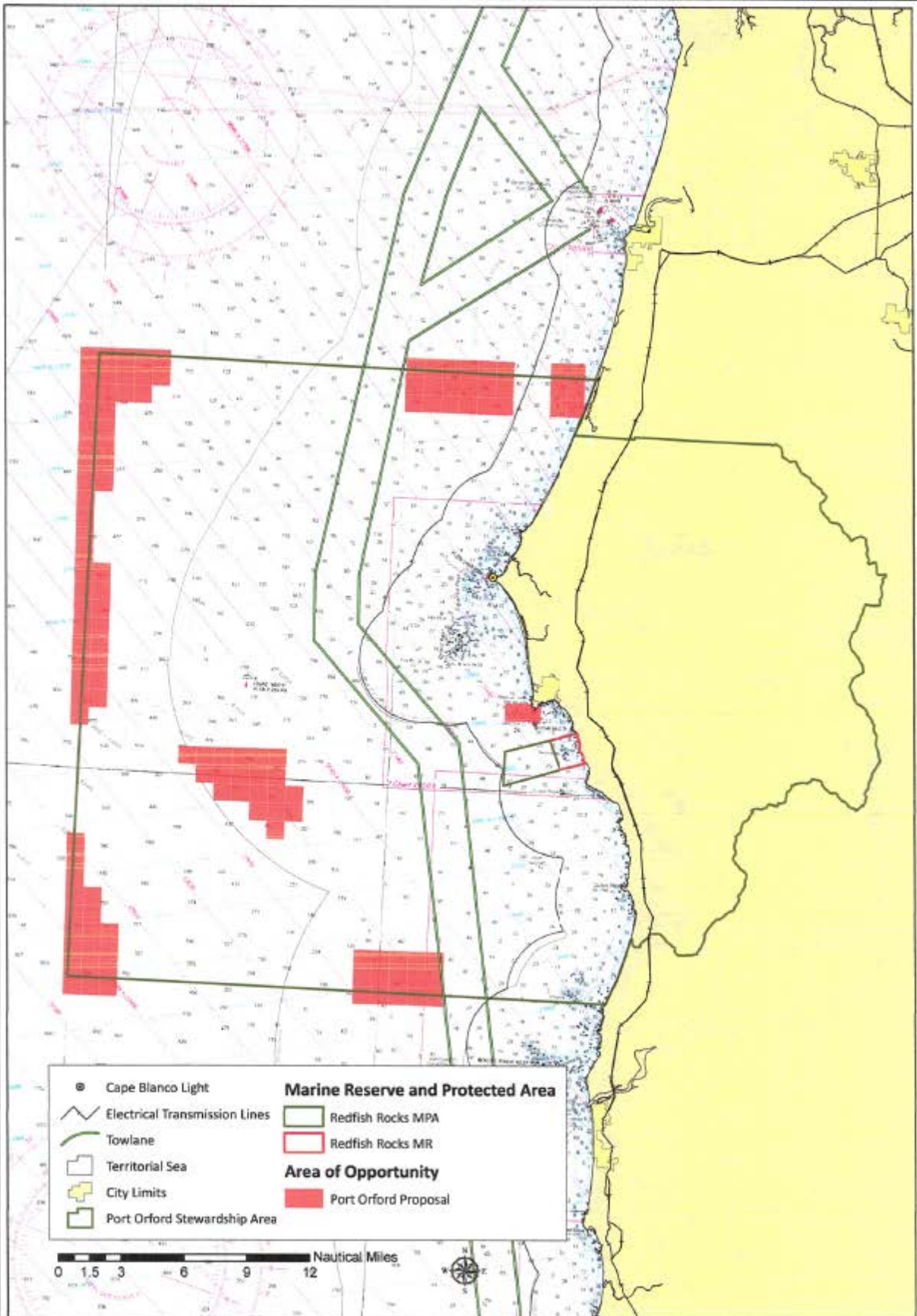


<ul style="list-style-type: none"> <li>● Cape Blanco Light</li> <li>⚡ Electrical Transmission Lines</li> <li>⚡ Electrical Substations</li> <li>— Towlane</li> <li>□ Territorial Sea</li> <li>⊕ City Limits</li> <li>□ Port Orford Stewardship Area</li> </ul>	<p><b>Marine Reserve and Protected Area</b></p> <ul style="list-style-type: none"> <li>□ Redfish Rocks MPA</li> <li>□ Redfish Rocks MR</li> </ul> <p><b>PO Commercial Fishing MARXAN</b></p> <ul style="list-style-type: none"> <li>□ Level 1 - 70% protection</li> </ul>	<p><b>Existing Beneficial Uses</b></p> <ul style="list-style-type: none"> <li>□ All Targets Level 1</li> </ul> <p><b>Nearshore Ecological Data Atlas</b></p> <ul style="list-style-type: none"> <li>□ All targets Level 1</li> </ul>
---	---	--

0 2 4 8 12 16 Nautical Miles

# Port Orford Stewardship Area Marine Spatial Planning Workshop

## Areas of Opportunity - Public Comment Proposal





Loren Goddard, NSAT

“Remind you of the importance of the fishery that the letters to this body have tried to illustrate. We don’t think that the Ecotrust mapping accurately represents our valuable fishing grounds in between Otter Rock and Cascade Head. Without the areas between the two marine reserves, we are done. They are underrepresented in the states interpretation of the fishing maps.”

Jason Busch, OWET

“Thank you for the hard work you are doing. Need to negotiate balance between a planning structure with pre-determined sites, that provides certainty that we all want, with the flexibility for the industry to work with local communities. The areas on the map are covered in red, yet there are conversations about how to conduct ocean industry in those areas. I have some confusion with the use of MARXAN, in this case the whole is greater than the sum of the parts, if you take a look at the individual parts the sum is much larger. I think these need to be better communicated. I think this is on the right path, please call on OWET to provide comments of help with questions.”